

ETHERNET & IP AUTOMOTIVE TECHNOLOGY DAY

9-10 NOVEMBER 2022

PACIFICO YOKOHAMA NORTH (4TH FLOOR)

SUBJECT TO CHANGE WITHOUT NOTICE



CONTENTS

Welcome and Contact

Meeting Registration

Event Venue

Visa for entry to Japan

MySOS app to enter Japan

Foreign National Entry Requirement to Japan

Accommodation

Transportation

Networking Dinner

Departure

WELCOME

Yokohama, is the second largest city in Japan by population, after Tokyo, and the most populous municipality of Japan. It is the capital city of Kanagawa Prefecture. It lies on Tokyo Bay, south of Tokyo, in the Kantō region of the main island of Honshu. It is a major commercial hub of the Greater Tokyo Area. It was one of the first Japanese ports opened to foreign trade, in 1859. It's also known for Sankei-en Garden, a botanical park containing preserved Japanese residences from different eras, and the seaside Minato Mirai district, site of the 296m Landmark Tower.



WELCOME AND CONTACT

EIP@ATD 2022 is hosted by JASPAR



Please contact Rosalinda Saravia or Rudi Schubert at eipatd-requests@ieee.org



EVENT REGISTRATION

Please register your intention to participate

<https://standards.ieee.org/events/automotive/index.html#registration>

Event registration does not include hotel reservation. Please refer to the hotel information on the following pages.



EVENT VENUE: OUTSIDE VIEW

The EIP@ATD Technology Day will take place at the
PACIFICO Yokohama NORTH

1 Chome-1-2 Minatomirai, Nishi Ward, Yokohama, Kanagawa 220-0012, Japan
Tel No. 81 045-221-2155

URL: <https://www.pacifico.co.jp/planner/facilities/north/tabid/612/Default.aspx>

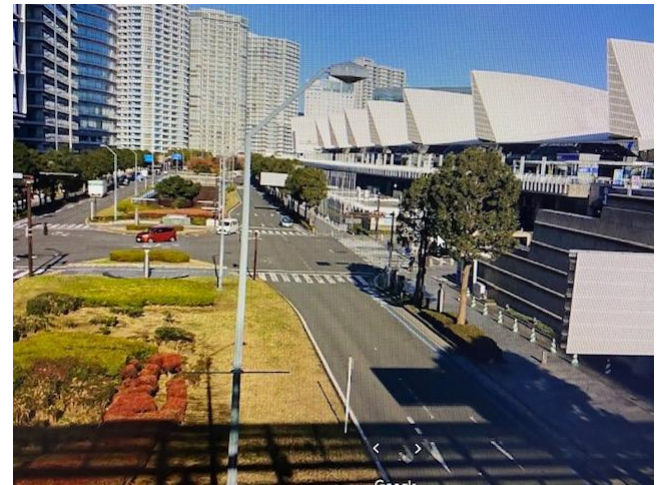


EVENT VENUE: OUTSIDE VIEW

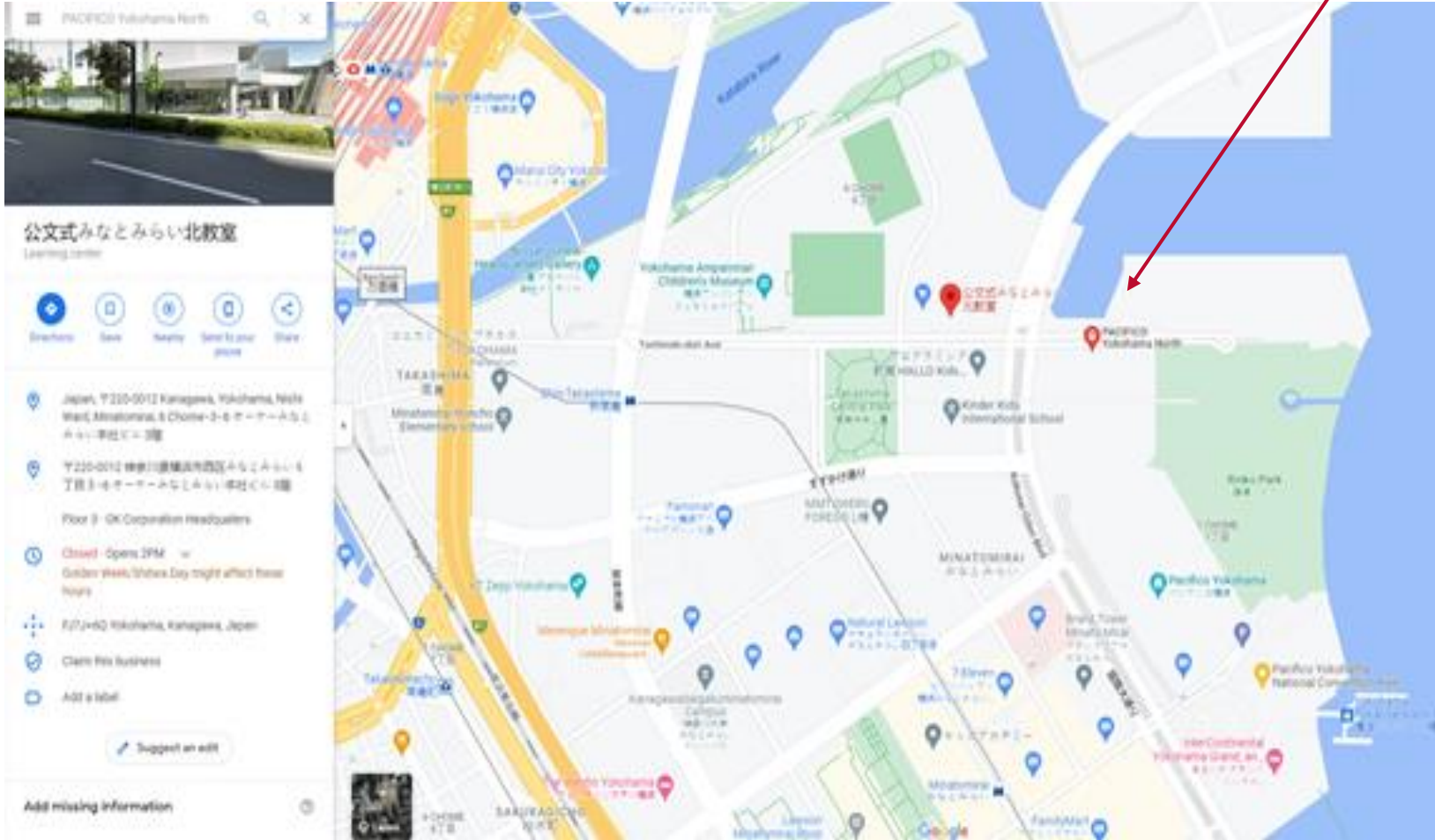
The EIP@ATD Technology Day will take place at the
PACIFICO Yokohama NORTH

1 Chome-1-2 Minatomirai, Nishi Ward, Yokohama, Kanagawa 220-0012, Japan
Tel No. 81 045-221-2155

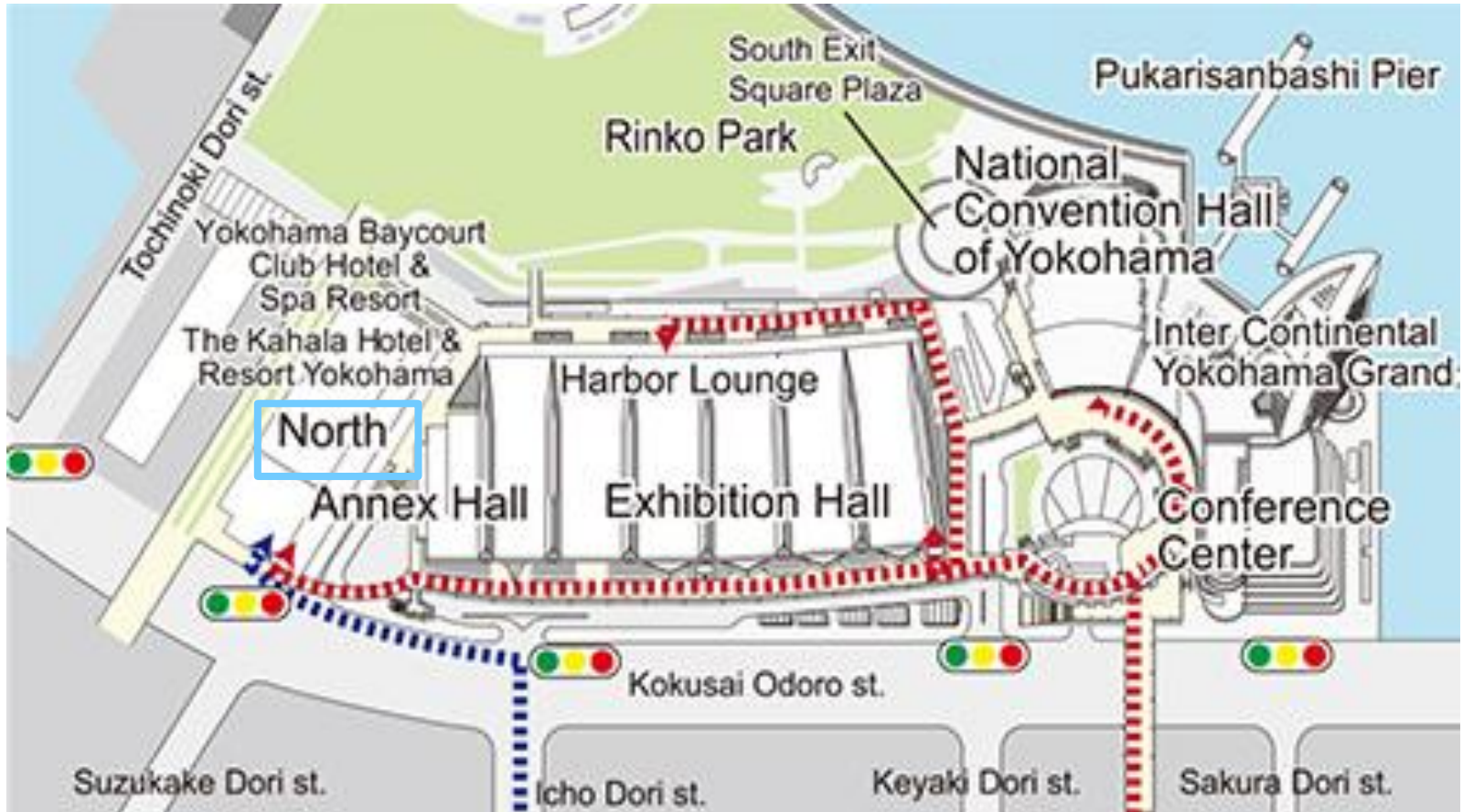
URL: <https://www.pacifico.co.jp/planner/facilities/north/tabid/612/Default.aspx>



EVENT VENUE: PACIFICO YOKOHAMA NORTH STREET MAP



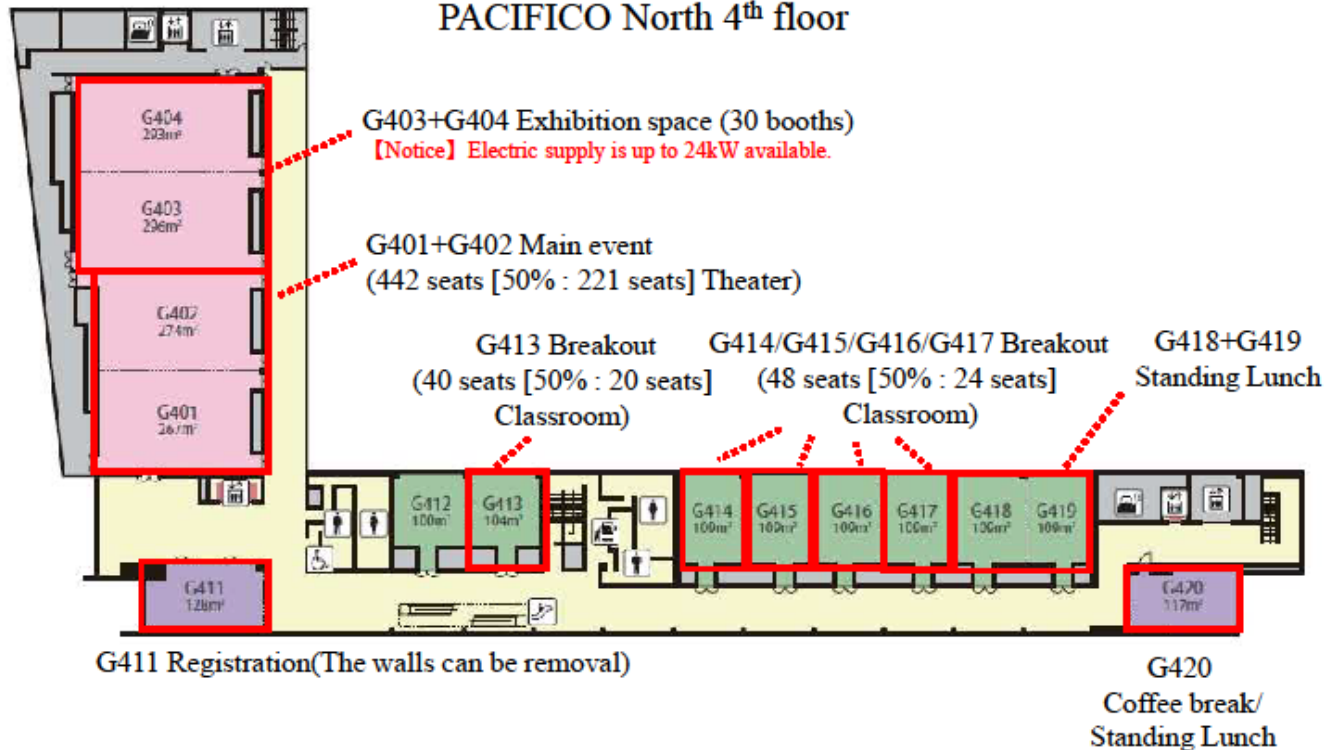
EVENT VENUE: PACIFICO YOKOHAMA NORTH



EVENT VENUE: PACIFICO YOKOHAMA NORTH LAYOUT

EXHIBIT H

【EIP@AID】 Nov 9th – Nov 10th 2022
PACIFICO North 4th floor



EVENT VENUE: PACIFICO YOKOHAMA NORTH LAYOUT

【EIP@AID】 Nov 9th 2022
Annex Hall 2nd floor

3min walk to Annex Hall from North
through the pedestrian deck.



F201-F204 Networking Party
(800 people [50% : 400 people]
Standing Buffet)



EVENT VENUE: PACIFICO YOKOHAMA COVID-19 PROTOCOLS

**Masks must be worn while on the premises. Surgical/Medical masks are preferred
Please bring enough surgical/medical masks to cover the days you will be in the facility.**



**If you have symptoms of respiratory illness, please do not attend the conference and seek medical advice.
For more information visit: <https://www.pacifico.co.jp/english/destination/tabid/691/Default.aspx>**

EVENT VENUE: DIRECTIONS

Please pick up your attendee packet at the **REGISTRATION DESK ON THE 4th floor.**



VISA FOR ENTRY IN JAPAN

You may need a visa for entry into Japan. Please check that with your travel agency. Please visit the Ministry of Foreign Affairs (MOFA) website for more information:

https://www.mofa.go.jp/j_info/visit/visa/index.html#visa1

If you need a visa, the IEEE may be able to provide you with an invitation letter. Please contact Rosalinda Saravia eipatd-requests@ieee.org



INSTALL MYSOS APP BEFORE ENTERING JAPAN FOR QUICK ENTRY

✂ MySOS is an app to report your health condition and location after entering Japan. It is also used to pre-register for quarantine procedures before you enter Japan.

Before entering Japan, install the MySOS app on your smartphone/device. Go to <https://www.hco.mhlw.go.jp/fasttrack/en/> to download the app.

If you do not have a smartphone, please complete [the Questionnaire WEB](#) survey online, and bring the resulting QR code with you.

Complete your quarantine pre-registration at least 6 hours prior to scheduled arrival in Japan

Documents required

- Test certificate
- Vaccination certificate (see below for details)

For more information: <https://www.hco.mhlw.go.jp/result/en/none.html>

FOREIGN NATIONAL ENTRY REQUIREMENTS TO JAPAN

The Japanese government has announced that restrictions on new entries of foreign nationals will be lifted, effective October 11, 2022 (midnight, Japan time).

Foreign nationals will be allowed to visit Japan for tourism purposes without any limitations of purchasing through a travel agency or traveling as part of a guided tour.

Visas are no longer required to enter Japan for short-term stays within 90 days.* ERFS (Entrants, Returnees Follow-up System) will also no longer be required. *Visa exemptions for short-term stays apply only if you are a citizen of an eligible country (including the U.S., Canada, and Mexico).

FOREIGN NATIONAL ENTRY REQUIREMENTS TO JAPAN

All eligible passengers entering Japan with a valid COVID-19 vaccination certificate no longer need to present a negative COVID-19 test result taken within 72 hours prior to departure.

Those who do not meet vaccination requirements still need to present a negative COVID-19 test result before departure. Please go to:

https://www.mofa.go.jp/ca/fna/page4e_001053.html#section3 for details.

● Requirements for travelers who are fully vaccinated (2 doses + booster shot):

Download “Fast Track” App (My SOS), Valid COVID-19 vaccination certificate, Questionnaire

● Requirements for travelers who are NOT fully vaccinated:

Download “Fast Track” App (My SOS), Negative COVID-19 test results taken within 72 hours before departure, Questionnaire

The information found on attendee information is subject to change without prior notice. We recommend attendees confirm the latest requirements for Japan entry before making plans, as requirements continue to change.

FOREIGN NATIONAL ENTRY REQUIREMENTS TO JAPAN

For the Japan Ministry of Foreign Affairs, please go here:

https://www.mofa.go.jp/ca/fna/page4e_001053.html

For the Japan Ministry of Health, Labour and Welfare, please go here:

<https://www.mhlw.go.jp/stf/covid-19/bordercontrol.html>

ACCOMMODATIONS: SUGGESTED HOTELS

[InterContinental Yokohama Grand](#) – located next to the PACIFICO Yokohama and connected with the pedestrian deck. There is a walkway from the 2nd floor to Queens Square, Landmark, and the subway.

There is no room block arranged.

Link to [book here](#)

1-1-1 Minato-Mirai, Nishi-Ku
Yokohama 220-8522 Japan
Tel#+81(45)-223-2222

ACCOMMODATIONS: SUGGESTED HOTELS

- [The Yokohama Bay Hotel Tokyu](#) - located in Queen's Square Yokohama, which is a new shopping complex in MM21 area. From Minatomirai Line Minatomirai Station: 1 minute on foot.
- [Yokohama Royal Park Hotel](#) - located in "Yokohama Landmark Tower," the highest building in Japan. The guest rooms are on floors 52 to 67. From JR Keihin Tohoku Line Sakuragicho Station: 5 minutes on foot
- [Navios Yokohama](#) - Close to Pacifico Yokohama. From JR Keihin Tohoku Line Sakuragicho Station: 7 minutes on foot
- [Yokohama Sakuragicho Washington Hotel](#) - Located at the entrance of Minato Mirai 21, very convenient for going out. From JR Keihin Tohoku Sakuragicho Station: immediate access

ACCOMMODATIONS: SUGGESTED HOTELS

- [Breezbay Hotel Resort And SPA](#) - From JR Keihin Tohoku Line Sakuragicho Station: 1 minute on foot
- [Toyoko Inn Yokohama Sakuragi-cho](#) - Guests at this hotel will receive a simple free breakfast of rice balls, miso soup, and coffee. All guest rooms also feature free internet access. Check-in is available daily until midnight, and all stays include breakfast free of charge. From JR Keihin Tohoku Line Sakuragicho Station: 4 minutes on foot
- [New Otani Inn Yokohama Premium \(Formerly: New Otani Inn Yokohama\)](#) - located near JR Sakuragicho Station in Minatomirai. From JR Keihin Tohoku Line Sakuragicho Station: 1 minute on foot
- [Yokohama Minato Mirai Manyo Club](#) -From Minatomirai Line Minatomirai Station: 7 minutes on foot

TRANSPORTATION FROM TOKYO INTERNATIONAL AIRPORT (HANEDA)

▪ From Tokyo International Airport (Haneda Airport)

- By train 35 minutes
 - ❖ Take a limited express train bound for Zushi on the Keihin Kyuko Line, get off at Yokohama Station, change to a train on the Minato Mirai Line, and get off at Minato Mirai Station. (about 35 minutes)
- By Airport limousine Bus 40 minutes
 - ❖ About 40 minutes by airport shuttle bus to [YCAT](#) (Yokohama Station) and then a taxi or a train on the Minato Mirai Line from Yokohama Station
 - ❖ <http://hnd-bus.com/airport/>
- By Car/Taxi 20 minutes

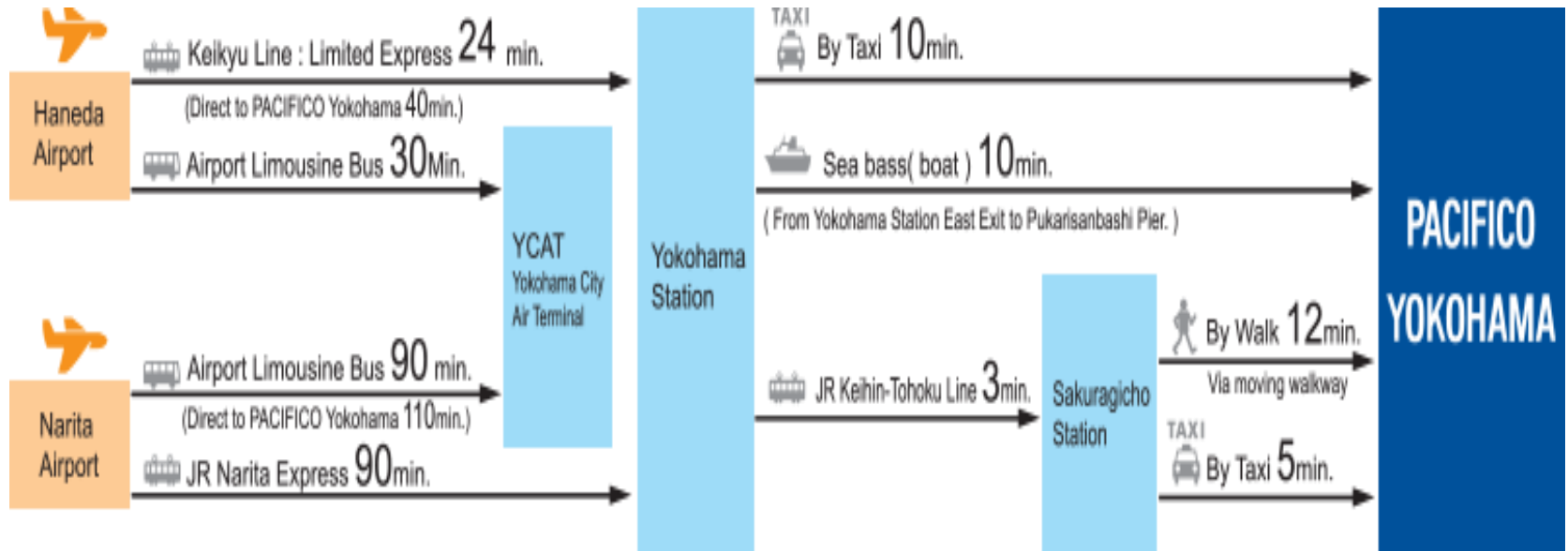
TRANSPORTATION FROM NARITA INTERNATIONAL AIRPORT

▪ From Narita International Airport

- By Train 100 minutes: Take the JR Narita Express
 - ❖ Take a train on the JR Narita Express Line, get off at Yokohama Station, change to a train on the Minato Mirai Line and get off at Minato Mirai Station. (about 100 minutes).
- By Airport limousine bus 110 minutes
 - ❖ Take the Airport Limousine bus to YCAT (Yokohama Station) and then a taxi or train on the Minato Mirai Line from Yokohama Station to Pacifico Yokohama.
 - ❖ <https://www.limousinebus.co.jp/en/>

Note: Times are approximate

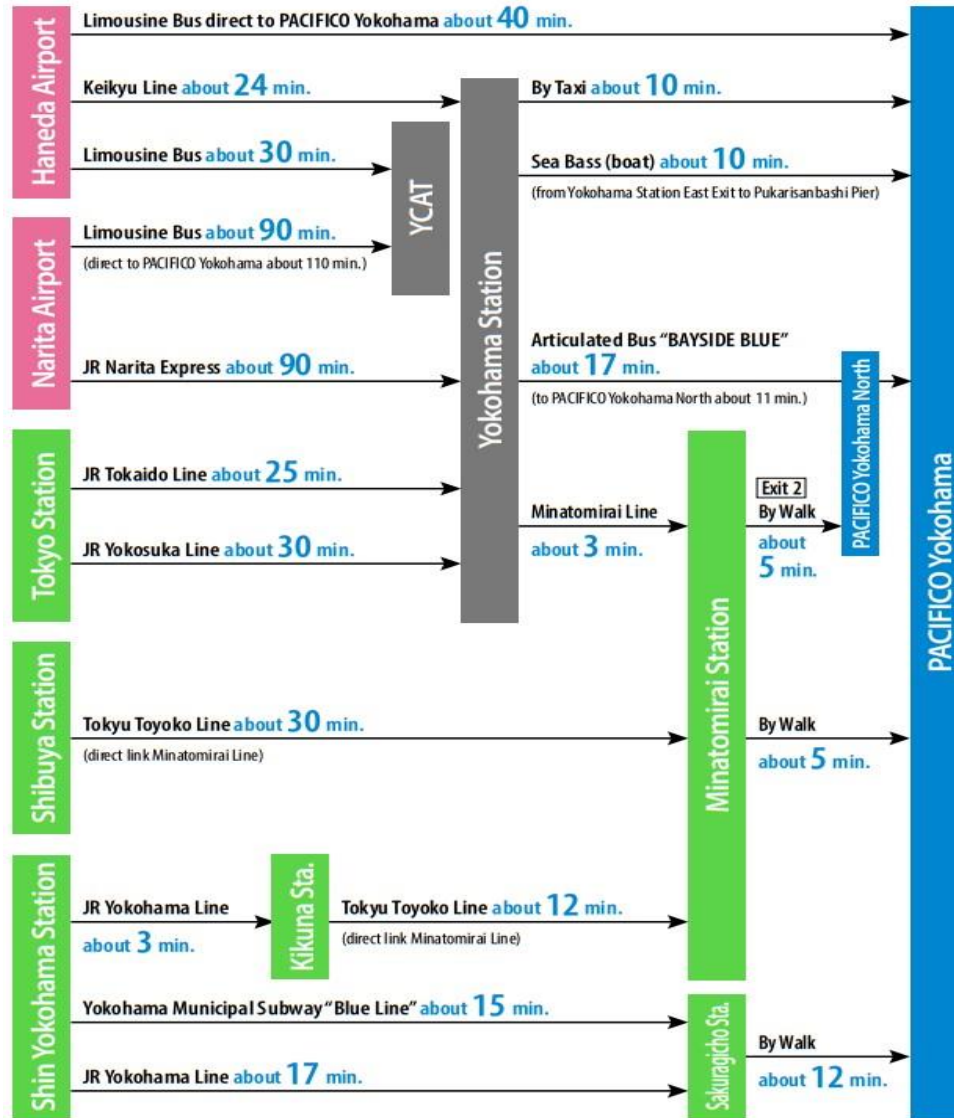
TRANSPORTATION CONTINUED



For more information on how to get to Pacifico Yokohama

<http://www.pacifico.co.jp/english/destination/access/tabid/502/Default.aspx>

TRANSPORTATION CONTINUED



TRANSPORTATION FROM THE NEAREST TRAIN STATIONS



From Minato Mirai Station

5 minutes on foot from Minato Mirai Station [Minato Mirai Line (Tokyu Toyoko Line/ Fukutoshin Line direct)]

Please proceed toward Keiyu Hospital from "Exit 2 (Ichodori Exit)".

<https://www.youtube.com/watch?v=O2Fl8zief3s&t=9s>

TRANSPORTATION FROM THE NEAREST TRAIN STATIONS CONTINUED

From Sakuragicho Station

12 minutes on foot, 11 minutes by bus, 5 minutes by taxi from Sakuragicho Station

[\(JR Keihin Tohoku Line/Yokohama Municipal Subway\)](#).

If you use the Moving Walkway, you can come without getting wet in the rain. (Excluding some facilities)

On foot

Proceed toward Minatomirai and use the "moving walkway". Continue through the shopping malls "Landmark Plaza" (3F) and "Queen's Square" (2F), and cross the overpass (Queen Mall Bridge). (12 minutes) * When it rains, you will not get wet if you pass the 1st floor.

By taxi

Please use the taxi stand in front of the station (5 minutes)

By bus

From Sakuragicho Station Bus Terminal No. 3, take the municipal bus "Pacifico Yokohama Yuki" and get off at "Exhibition Hall" or "Pacifico Yokohama" (11 minutes)



Moving walkway

TRANSPORTATION BY TAXI, TRAIN, BUS

From Yokohama Station (JR Line / Shuttle bus “Airport Limousine” services, and others)

10 minutes by taxi, 10 minutes by Sea Bass (boat) from Yokohama Station (JR Tokaido Line, Yokosuka Line and Keihin Tohoku Line, Keikyu Line, Sotestu Line, Airport Limousine Bus)

By taxi

You can find a taxi at Porta at the East Exit (the 2nd basement floor) or YCAT (Yokohama City Air Terminal) for the taxi stand. (10 minutes)

By train

Transfer to Minato Mirai Line or JR Keihin Tohokou Line.

* Actual travel times depend on the facilities being used and traffic conditions.

* Transfer times are not included.

By bus (Articulated bus)

From the East Exit Bus Terminal, take [Bayside Blue](#) to “PACIFICO Yokohama North ” (11 minutes).



PARKING IN PACIFICO

North Parking Lot

Park in the 'North Parking Lot **(a toll parking lot)**

Parking lot is available on M2F and 2F of the North.

Rates:

7:00 - 24:00 280 yen/30 minutes, 560 yen/hour

0:00 - 7:00 140 yen/30 minutes, 280 yen/hour

Weekday Discount

Max 1,600 yen / 7:00 - 22:00



PARKING IN PACIFICO

Hours

7:00 - 24:00 (everyday)

*You can take your car out anytime 24 hours a day

There are no reservations for parking spaces.

Capacity

152 parking spaces

Maximum size of cars: 5.0 meters (L); 2.3 meters (W); 2.3 meters (H); 3.5 tons (Weight)

To park in the 'east parking space' in the North (free of charge)



NETWORKING DINNER: NOVEMBER 9, 2022

WHEN: NOVEMBER 9, 2022

DINNER START: 6:30PM

WHERE: Annex Hall 2nd Floor, F201-F204



DEPARTURE: BEFORE LEAVING JAPAN

Please check your country's specific information for COVID rules on outbound flights after the conference

At Haneda and Narita Airports, various testing options for the SARS-CoV-2 coronavirus are offered. They can be used by travelers as well as all other persons.

Narita Airport: Terminals 1&2 (COVID-19 testing operated by Nippon Medical School Narita International Airport Clinic)

https://www.narita-airport.jp/en/news/pcr_testing_center

To reserve: <https://www.nms-pcr.com/en/>

At Haneda Airport: Terminal 1,2 (COVID-19 testing operated by Kinoshita Group) and Terminal 3 (operated by Toho University)

The rapid testing facilities will conduct antigen tests, which provide results in roughly 15 minutes, for ¥1,800 (\$14). They will also offer polymerase chain reaction (PCR) tests, which take longer than antigen tests, for ¥1,900 (\$15), but only for those not departing the same day.

https://tokyo-haneda.com/en/service/facilities/covid19_pcr_test.html



SEE YOU THERE!

MATA CHIKAIUCHINI O AI SHIMASHOU
